

# EV002 Modem Installation Manual

To install the cellular modem kit (P/N: E800-1008), please follow the following steps.

The cellular modem kit must be installed in an EVSE which has been installed in an area with cellular reception.

Cellular modem kits are only compatible with EverCharge EV002, model numbers E800-1000 and E800-1001

When contacting EverCharge to confirm cellular reception, please provide the SIM information located underneath the QR code on the modem kit (shown below).



## Materials Needed

- Torque limiting screwdriver, set to 10 in-lbs
- T10 Torx drive
- T20 Torx drive (if security screw is installed)
- Modem Kit
  - Cellular modem assembly
  - (2) M3.0x10 Delta-PT screws (included)
- EV002

---

### Step 1

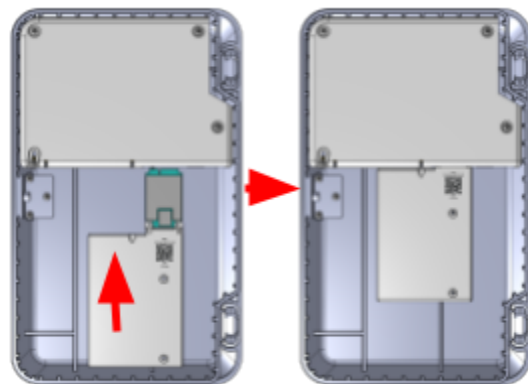
If installed, remove the security screw using a T20 Torx drive, located to the left of the button, on the right-hand side of the unit. Press the button on the right-hand side of the unit to open the door. If powered on, power off the unit by tripping the internal disconnect.



---

### Step 2

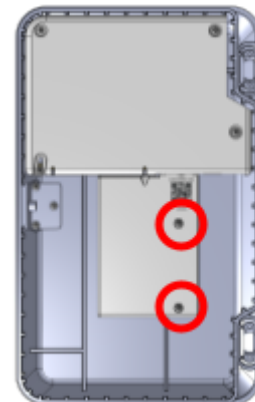
Place the assembly into the lid, carefully sliding it forward. You should feel the modem snap into place, and the holes on the modem kit should be aligned to the holes on the lid.



---

### Step 3

Secure the assembly to the lid using a T10 Torx drive and two provided M3.0x10 Delta-PT screws, tightening to 10 in-lbs. Reset the circuit breaker by switching the internal disconnect to the on position.



---

### Step 4

Close the lid, ensuring it properly latches and will not swing open. Install the security screw, only if previously installed, using a T20 Torx drive tightening to 10 in-lbs. Contact EverCharge at **415.429.2971** to confirm cellular reception. Provide the SIM information, located under the QR code on the label, to connect to the device.